

Page

3.....	Introduction
4.....	System Requirements
5.....	Installation
6.....	Network Installation & Technical Information
7-8.....	Getting Started

Teacher Options:

9.....	General
10.....	Devices
11-12.....	Tools
13.....	Adjusting Colour
14-18.....	Special Effects
19.....	Scanning Images
20.....	Emailing Images
21.....	Copyright & Trademarks
22.....	About 2Simple
23.....	Contacting 2Simple

“After 2Animate was released, requests and questions flooded in. It was evident that digital photographs and image manipulation have become a large part of any child’s ICT experience. It became clear that what was missing was a straightforward, user-friendly tool that would introduce children to the skills of photo editing.

In the 2Simple tradition, Photo Simple is a creative tool. It is designed to complement the curriculum in Art & Design, ICT and further; it is also an auxiliary tool to make image preparation and display creation simple for both children and teachers.

I hope teachers and children enjoy using the program and I look forward to seeing the creations of all those budding graphic designers!”

- Sean Naghibi, creator of Photo Simple

④ System Requirements

Operating System: Windows 2000/XP/Vista

Processor: Recommended Pentium II, 500MHz

Memory: Minimum 512MB RAM (Recommended 1 GB)

Hard Drive: 40 MB min

Display: Minimum 1024x768, 16 bit High Colour

Windows Media Player 9 (to view videos on Windows 2000 computers) - included on the CD-ROM

CD-ROM Drive Required for Installation

Standard Mouse, Keyboard

Internet connection (if using email feature)

Printer

MSIs available on request. An MSI for Windows 2000/2003 servers is included on the disc.

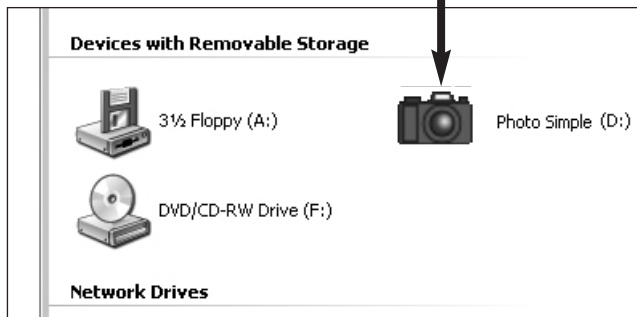
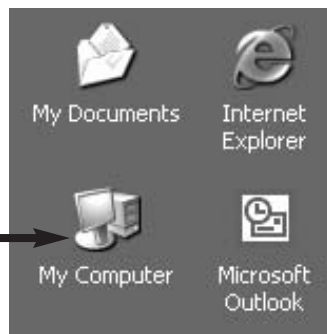
Adobe Reader required to view the user guide (Available on CD-ROM)

If you require further help, please do not hesitate to contact our technical support on (+44) 020 8203 1781 or www.2Simple.com/support.

To install Photo Simple:

1. Put the CD in the drive.
2. Double-click the 'My Computer' icon on your desktop
3. Double-click the Photo Simple icon to commence the installation
4. Follow the instructions on screen to complete the installation.

This will install your software and add a link from the Start Menu to Photo Simple.



⑥ Network installation & technical information

Installing Photo Simple

Photo Simple is designed to work on ALL networks. You can find clear installation instructions on the CD and we provide full support on our website: www.2simple.com/support

If you need help with a specific installation, please do not hesitate to contact us via our website or email us at support@2simple.com

2Simple will provide MSI installations free of charge. An MSI for Windows 2000/2003 servers is included on the disc.

As networks differ from one another, we can and will help you when needed. If any of our instructions do not work, please do contact us as we want to provide accurate information and we rely on your feedback to help us get it right.

2Simple Software

Enterprise House

2 The Crest

Hendon, London

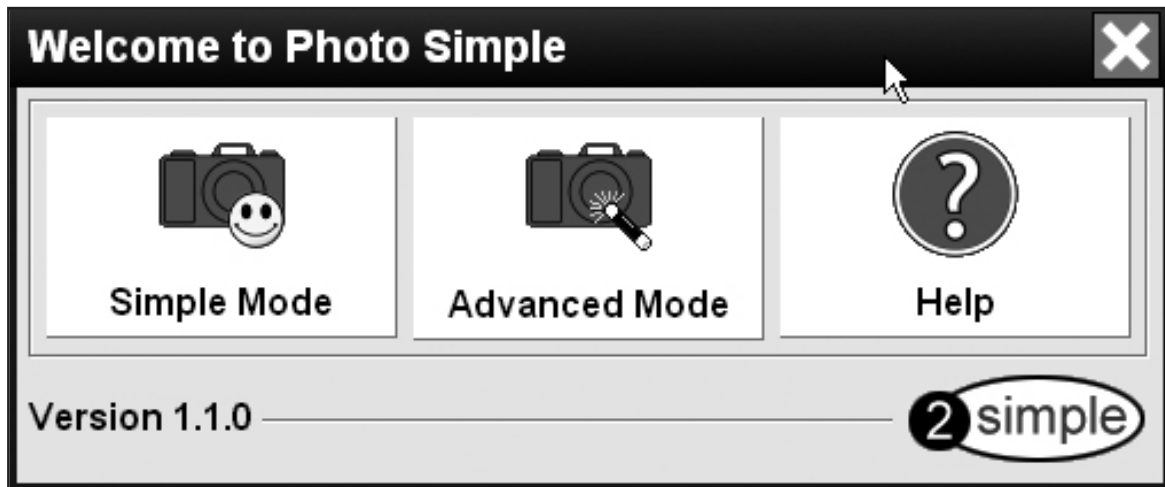
NW4 2HN

Tel: (+44) 020 8203 1781

Fax: (+44) 020 8202 6370

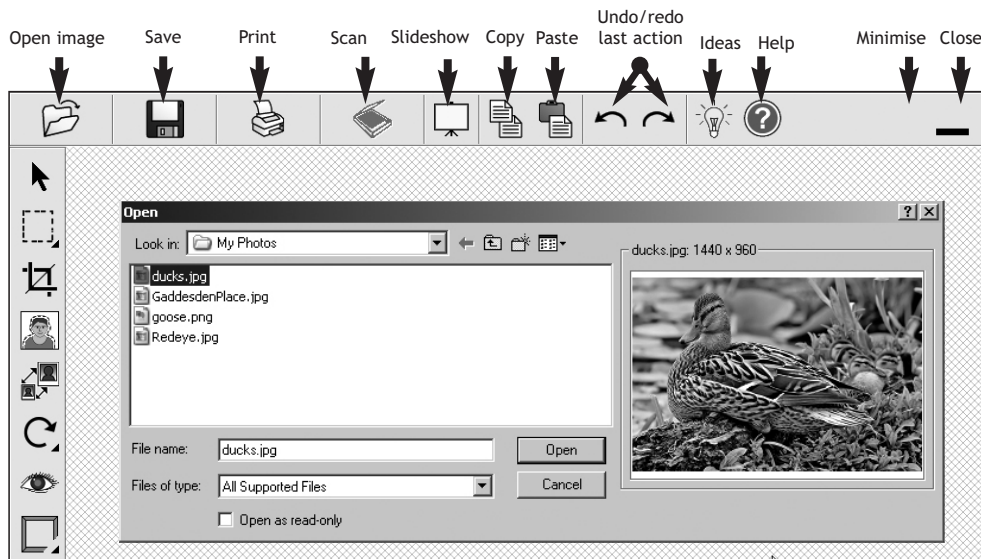
Click Start - Programs - 2Simple Software - Photo Simple

Click on a button to launch Simple Mode, Advanced Mode or the Help Videos.



8 Getting Started

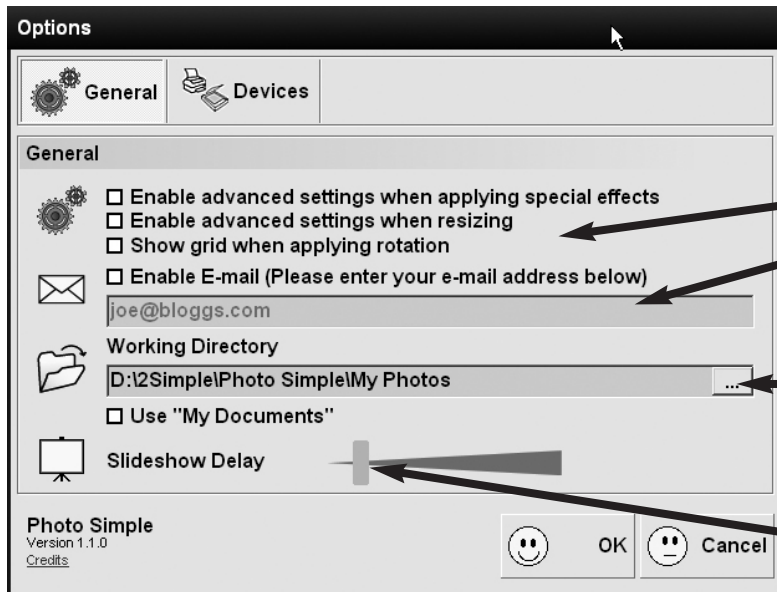
Getting started in Photo Simple is as easy as opening a photo. Just click on the yellow folder icon in the top left corner of the screen and choose your photo. A dialogue box will open up in order for you to locate the image you want to work with. The window on the right of the box will show you a preview to help you choose your photo. Other basic controls are explained below.



Some of the features on the main toolbars will not be available in the Simple Mode.

Teacher Options - General 9

To access the Teacher Options, hold Ctrl and Shift then tap 'O'.



Enable advanced settings for rotating, resizing and applying special effects. Photo Simple will start with simple settings by default. These options are disabled under Simple Mode.

If you wish to enable or disable emailing of photos, you can do that here.

You can also choose the location you save to and open from here. Just click here to browse to your chosen working directory.

Use this slider to increase or decrease the delay between slideshow images.

10 Teacher Options - Devices

From this screen you can choose your printer and scanner if you have these available. All installed devices will appear in the dropdown menus.

Check this box to disable the scanner button.

Check this box to enable your own scanner's settings and options.

Options

General Devices

Devices

Available Printers
Alpha Five Printer

Available Scanners

Disable Scanner Button

Enable advanced settings when scanning a photo

Photo Simple
Version 1.1.0
[Credits](#)

OK Cancel



Arrow

The Arrow tool deselects the tool you are currently using. For example, when you have finished resizing, you can click the Arrow tool to remove the resizing guides that appear at the corners of the picture.



Select

Just click on the Select button. Then you can click on the square or circle to choose the shape of your selection, or the lasso option to create a freehand selection area. Click and drag to define your selection on your photo. The select tool applies only to the 3 special effects options.



Cut Out

Select part of an image to cut out or delete. You can also use this tool to cut out the inverse of what you have selected.



Crop

The Crop button allows you to trim your photo down. When you click it, you'll see a selected box come up on the screen; the rest of the photo will be greyed out. Just click and drag the corners of the box until you have chosen the area you want to crop to. The areas you want to remove should be in the greyed out part. Then click the crop button again to confirm your choice and the crop will be applied.

12 Tools



Resize

Simple: Click on the Resize button. You will see that your photo is now selected. Just drag on the corners to visually resize your picture!

Advanced: The options will allow you to select from common preset sizes, or type in your own chosen dimensions.



Rotate

Click on the Rotate button to rotate your photos. The corners of the photo will be selected and you can just click and drag in a circle to arrange your images at a different angle.

By adding the Advanced settings in the Teacher Options, you can also see a grid when rotating, so you can be very precise about positioning.



Red Eye Removal

It would be a perfect photo. If the eyes hadn't changed colour when the flash went! You can use this handy tool to correct “red eye” in photos. Just click on the Red Eye Removal button, and you will see that your cursor becomes a small target. You can adjust the size of this using the slider. Then just click on the eyes in the photo to automatically adjust the colour.



Frames

A selection of pre-set frames to give your photo the finishing touch! Just click on the Frames button to see the range, and then click on the one you want to apply.



There are three options for managing the colour of the photo, accessed by clicking on this button.

Brightness - Use the slider to make the strength of the light in the photo stronger or weaker. The higher the brightness, the more “white” the photo will appear.

Contrast - Use the slider to adjust the strength of light and dark in the photo. The higher the contrast, the deeper the dark areas will appear, and the brighter the light areas will appear.

Saturation - Use the slider to adjust the depth of colour in the photo. The higher the saturation, the stronger the colours will appear.



There are four options for applying a colour effect, accessed by clicking on this button

- **Black and White** - Creates a shadowy, silhouette effect.
- **Greyscale** - Takes out the colour.
- **Sepia** - Gives the photo an antique sepia colour.
- **Inverse** - Inverts the colours used in the photo.

You can apply these effects to a selected area of the photo by using the Select tool.

14 Special Effects



Click on this button to access the following Special Effects:

Solarize

The Solarize effect creates a blend between a negative and positive image.

Simple

The colour balance in the effect are preset.

Advanced

Use three sliders to decide the amount of red, blue and green in the effect.

Colourise

Apply a colour wash to the whole photo.

Simple

The colour wash is red.

Advanced

Use three sliders to decide the amount of red, blue and green in the colour wash.

Sharpen

Bring out defined edges in your photo.

Simple

The amount that the photo is sharpened is preset.

Advanced

Choose from three different levels of sharpening.

Mosaic

Turn your photo into a mosaic!

Simple

The mosaic style is preset to small squares.

Advanced

Use two sliders to choose the horizontal and vertical dimensions of the individual pieces. If the dimensions are equal, this will create squares.

16) Special Effects

Oil Painting

Make your photo look like it's been created using oil paints. Great for making posters or achieving an “old-fashioned” effect.

Simple

The strength of the effect is preset.

Advanced

Use the slider to make the effect stronger; this will blur the edges more the higher it is set.

Blur

One of the most common graphic design effects. You could use it to give the impression of motion!

Simple

The amount of blur is preset.

Advanced

Use the slider to set the amount of blur you want to use.

Apply Texture

A pre-chosen paper texture gives depth to a photo. There are no advanced settings for this effect.

Tile

Investigate repeated patterns by tiling your photo!

Simple

This applies tiles in a 5 x 5 grid format.

Advanced

Use two sliders to choose the number of tiles across and down.

Colour Emboss

This adds a three dimensional edge to your photo, by embossing the edges. There are no advanced settings for this effect.

Tracing

Great for posters and creating defined figures, this traces around the edges of objects in the photo. There are no advanced settings for this effect.

18) Special Effects

Perspective

Discuss how objects seem to look smaller when they're further away by making the photo narrower in the distance. There are no advanced settings for this effect.

Reflection

Use the reflection effect to make repeated patterns and discuss symmetry.

Simple

The line of symmetry is vertical.

Advanced

Choose between vertical and horizontal lines of symmetry.



Colour Focus

A great effect for emphasising a particular part of a photograph. This can stimulate discussion about use of colour.

Click on the Colour Focus button. Your cursor will become a colour picker. Just click on the colour you want to focus on. The preview box will show the colour you have selected. When you're happy, click Apply. The entire photo will become greyscale - except for the colour you've chosen! NB: This effect does work best when one strong, distinct colour is chosen.

Click on the scanner icon (shown on the right) to launch scanning.

If you have more than one scanner installed, you can choose the one you want to use in the Teacher Options. Just hold down Ctrl + Shift + letter O and go to the Devices tab.



In the Teacher Options, there is also the option to enable advanced settings. This means that the software installed with the scanner handles all the scanning rather than Photo Simple itself. If you do find you have any problems using the simple scanning mode, we recommend you choose the advanced mode to continue.

20 Emailing Images

To enable emailing, just go into the Teacher Options and tick the box under the General tab. You will need to enter an email address from which to send your picture.



This will place the email icon (shown on the left) on your toolbar. When you are ready to send the photo, just click on this icon.

You can now fill in the email address of the recipient and any message you want to add.

The photo will arrive as a .jpg attachment.

Please note: Depending on your Internet provider's email configuration, it may take a few minutes for the email to arrive.

This feature should work for all email addresses. If you do experience problems, this may be due to the recipient's SMTP settings. Please try again, or use a different email address.

The software described in this document is a proprietary product of 2Simple Software Ltd and is furnished to the user under a license for use as specified in the license agreement. The software may be used or copied only in accordance with the terms of the agreement. Information in this document is subject to change without notice and does not represent a commitment on the part of 2Simple Software Ltd. No part of this document may be reproduced, transmitted, transcribed, stored in any retrieval system, or translated into any language without the express written permission of 2Simple Software Ltd.

Trademarks

2Simple, 2Simple Software, and Photo Simple are trademarks of 2Simple Software Ltd.

Adobe Reader is a registered trademark of Adobe Systems.

Flash player is a registered trademark of Adobe Systems in the United States and other countries.

All other trademarks and registered trademarks mentioned in this document are the property of their respective owners.

Copyright

Copyright © 2006, 2Simple Software Ltd. All Rights Reserved.

2Simple Software, United Kingdom

info@2Simple.com • www.2Simple.com

Photo Simple + User Guide - 1st (UK) Edition - Version - 1.0.0 (November 2006)

Author: Alexandra Roumbas, Ashley Goldstein, 2Simple Software Ltd.

Developer: Sean Naghibi, 2Simple Software Ltd.

Consultant: Ashley Goldstein

22 About 2Simple

All our software is designed on the following principles:

SIMPLICITY OF USE

The software has evolved in the classroom to meet the needs of very young pupils. It is simple to learn and simple to use. There are no 'wrong buttons' to press.

TRANSFER OF SKILLS

All our software has a common look and feel. It is designed to take pupils from what is familiar towards standard Windows™ interfaces.

DEVELOPED IN THE CLASSROOM FOR THE UK CURRICULUM

The software has been developed to meet the needs of the UK curriculum. It has been tested and refined in the classroom, and has evolved based on research and suggestions from teachers.

VIDEO OF IDEAS FOR ACTIVITIES

All our software comes with a large number of ideas for use and tutorials. These take the form of short videos which run on the computer and teach staff and pupils to use the software in an appropriate curriculum context.

EMPHASIS ON CREATIVITY

Making the software simple allows pupils to focus on the content of their work. Whilst the software is powerful, it is the pupils who are creating, not the computer.

READING AGE

Many pupils are held back by complex language in some software packages. Our software uses simple icons and appropriate text, ensuring reading age is not a barrier to ICT learning.

INDEPENDENT USE

The simplicity of the software, combined with the use of video, makes the software ideal for independent use.

You can contact us:

For general information: info@2simple.com

For support issues:

www.2Simple.com/support or support@2simple.com

Tel: (+44) 020 8203 1781

Fax: (+44) 020 8202 6370

You can write to us:

2Simple Software
Enterprise House
2, The Crest
Hendon, London UK
NW4 2HN

Faulty Media

Should the CD ROM develop a fault we will replace it free of charge.