

# 2Paint A Picture

Written by Max Wainwright © thinkICT Ltd 2007

## User Guide



# Contents

	page
Network installation & technical information.....	3
Installation for stand-alone machines.....	4
Getting started .....	5
Printing, Saving etc.....	6
Teacher Options - General.....	7
Teacher Options - Printing.....	8
Simple screens and pattern making.....	9
Using different brushes and styles.....	10
Brushes and styles - continued.....	11
Adjusting the brush size and wetness.....	12
eCollage and All Tools.....	13
All Tools - Photo editing/digital brushes.....	14
All Tools - details.....	15
Outline tools.....	16
Mixing colours.....	17
Select+Right-Click .....	18
Using the training videos.....	19
System Requirements.....	20
Copyright Information.....	21
Contacting 2Simple.....	22

**Whilst this manual provides help in using 2Paint A Picture, we recommend you also watch the videos provided on the CD!**

## Network installation & technical information

3

### **Installing 2Paint A Picture**

2Paint A Picture is designed to work on ALL networks. You can find clear installation instructions on the CD and we provide full support on our website: **[www.2simple.com/support](http://www.2simple.com/support)**

If you need help with a specific installation, please do not hesitate to contact us via our website or email us at **[support@2simple.com](mailto:support@2simple.com)**

2Simple will provide MSI installations free of charge.

As networks differ from one another, we can and will help you when needed. If any of our instructions do not work, please do contact us as we want to provide accurate information and we rely on your feedback to help us get it right.

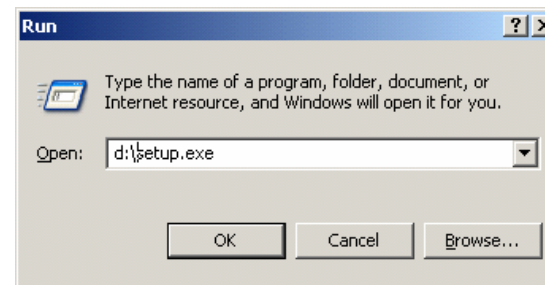
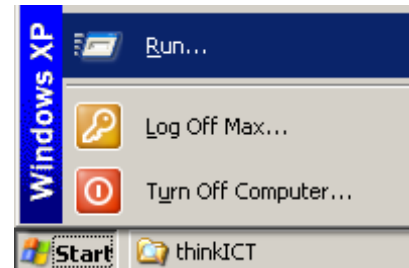
**2Simple Software  
Enterprise House  
2 The Crest  
Hendon, London  
NW4 2HN**

**Tel: (+44) 020 8203 1781  
Fax: (+44) 020 8202 6370**

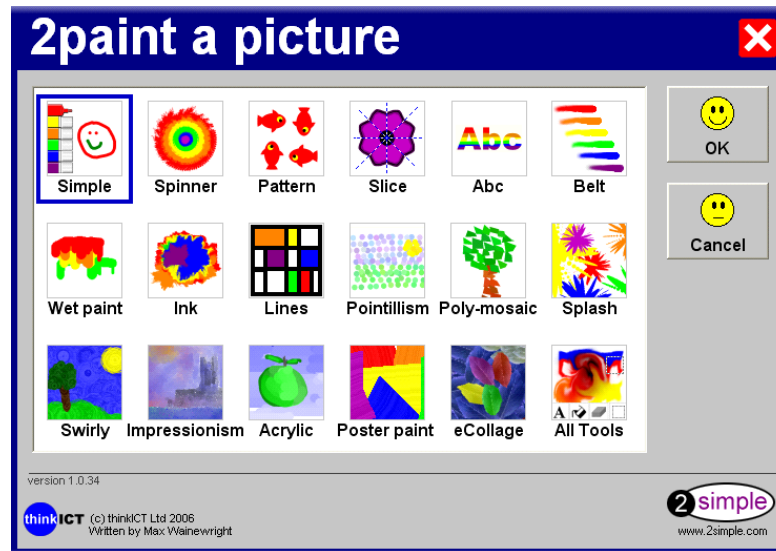
## Installation for stand-alone machines

4

1. Put the CD in the drive
2. If nothing happens click **'Start' - 'Run'**
3. Type **D:\setup.exe**  
*(If your CD drive is drive E, type e:\setup.exe etc)*
4. Click OK.
5. Follow the instructions on screen to complete the installation.  
***This will install your software & add a link from the 'start menu' to 2Paint A Picture.***



# Getting started



Choose a layout then click OK.

The first 6 are designed for Foundation stage/early KS1 pupils. The other screens focus on particular styles and are ideal for late KS1/KS2 pupils to explore artistic techniques.

'All Tools' combines all the brushes and styles in one layout. It also includes many photo-editing tools.

Watch the videos and choose the best place to start.

## Printing, saving etc

6



Click on the blank white sheet to start a new picture or choose a new template.

The open and save buttons on the toolbar allow pupils to store their work. The teacher options (see page 7 & 8) allow you to choose whether to use simplified or standard dialog boxes to do this.

Undo - 'undoes' the last thing you drew.

Print - Print your picture

Plus and Minus allow you to zoom in and out of your picture to focus on the detail.

The mannequin is called the Outline tool (see pg 16).

# Teacher Options - General

7

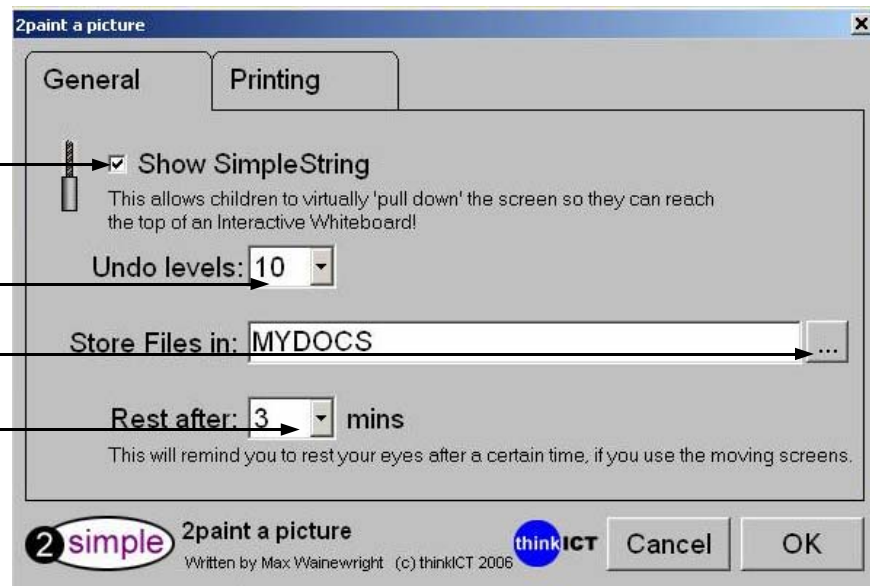
To access the Teacher Options, hold Ctrl and Shift, then tap the letter 'O'.

Check box to activate Simple String feature.

Choose number of 'undos'.

Change where work is saved to.

Change moving screens eye rest reminder time.

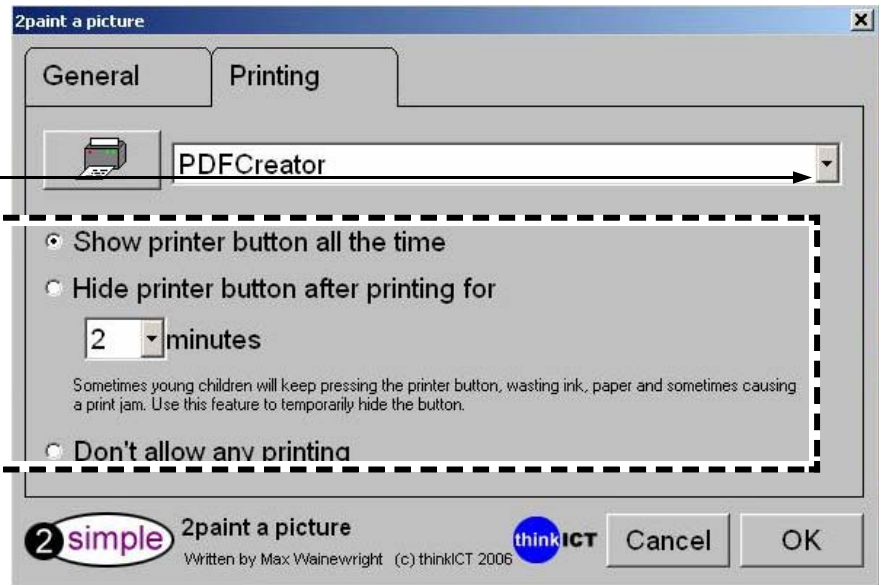


# Teacher Options - Printing

To access the Teacher Options, hold Ctrl and Shift, then tap the letter 'O'.

Choose your printer

Choose whether to show or hide the printer button, and to change how long to hide the printer button for after printing.





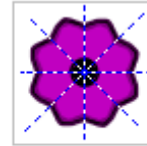
# Simple screens and pattern making

9



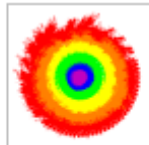
**Simple**

Classic felt tips with a blank screen - just click and draw.



**Slice**

Paint inside the dotted lines and it is replicated around the centre. Drag on the corner to increase or decrease the angle.



**Spinner**

Draw on the round canvas while it spins. Control the speed to affect how much the ink spreads out.



**Abc**

Write some words, draw in the box and your drawing becomes a pattern across the letters.



**Pattern**

Draw a picture and create patterns across the page. Use the slider and icons to vary the direction and number of repetitions.



**Belt**

Draw across a screen as it moves from left to right. Your drawing will disappear off one side only to reappear on the other.

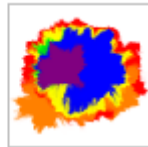
**NOTE: for all 6 Simple Screens, right-clicking on your mouse will erase and holding down shift on your keyboard while clicking the mouse will fill.**

## Using different brushes and styles

10



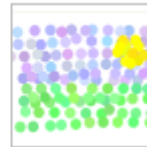
Wet paint



Ink



Lines



Pointillism



Poly-mosaic



Splash



Swirly



Impressionism



Acrylic



Poster paint

Explore various brushes, techniques and styles, and use 2Paint A Picture to recreate and investigate the work of well-known artists. For a brief summary of each brush, go to page 11.

The Outline tool appears on these brush templates.

## Brushes and styles - continued

1	1
---	---

Wet paint - Use thick, drippy paint. Adjust the water to make the paint more or less runny. The colours will mix together as they drip over each other.

Ink - The ink will spread as you paint.

Lines - Draw along straight lines. Shift + click to fill a square with colour.

Pointillism - Every line painted is a series of dots which will vary slightly around the colour chosen to give greater depth to your picture. Press Ctrl+click for an outlined effect, Shift+click for uneven edges and Ctrl+Shift and click for a combination of the two.

Poly-mosaic - Draw using a polygonal stamp to give your picture a mosaic effect. Shift+click to give a shadow effect, Ctrl+click to make it hollow.

Splash - Splash paint onto the screen with every click. Move your mouse as the paint splashes to vary the effect. Shift+click to give splotches.

Swirly - The paint swirls under the brush to give texture and depth to your painting.

Impressionism - Create a soft, watercolour effect and deepen the colour as you draw repeatedly over the same area. Adjust the water to give a harder or softer effect.

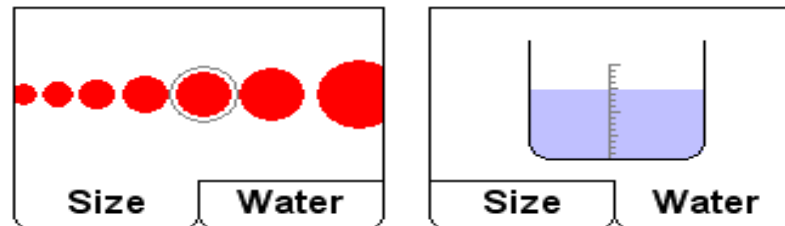
Acrylic - Vary the direction of the brushstrokes and build layers of colour while you paint by adjusting the water.

Poster Paint - Add texture to a painting by using thick strokes of poster paint.

**NOTE: Right-clicking will erase for all tools and styles.**

## Adjusting the brush size and wetness

1 2



Click along the sizes to move back and forth, or use the arrows on the keyboard to quickly scroll along.

The amount of water used will affect the thickness of the paint. More water will make the paint more transparent and allow colour mixing. Use the up and down arrows on your keyboard to adjust the water level, or drag over the water symbol with your mouse.

## eCollage & All Tools

1 3

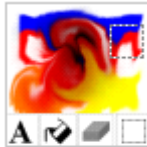


**eCollage**

Draw or open a scanned image. You can make further adjustments to this with the felt tips.

Choosing a felt tip colour will affect the colour in which your image is stamped across the screen.

You can use the sliders to adjust the colour intensity and the size of the stamp.



**All Tools**

All Tools combines all the painting and drawing effects from other screens. This allows mixing of brush styles, and adding text.

In this screen you can also import photographs and add special effects. For more details about each photo editing tool, see page 14.

## All Tools - photo editing/digital brushes

1 4



Blur - Use a brush to blur the image.

Pixelate - Turn the image into square pixels.

Posterise - Changes the number of colours in an image.

Colour Rubber - Erases the colour selected from the picture, leaving everything else intact.

Black & White - The image turns black and white wherever you draw.

Solarise - Inverts the colours in an image.

Wind - Create a windswept effect by applying this brush.

Magic Finger - Use this brush to smudge and blur colours together.

Tint - Apply a tint to any part of the picture.

Brighten - Lighten the colour wherever you brush.

Darken - Darken the colour wherever you brush.

Magic Brush - Position the floating square and then wherever you draw it will duplicate whatever is within the square.  
Shift+click brings the square back to you.

## All Tools - details

1 5



Felt tip icon - Click on this to choose a brush type. The icon will change accordingly

Shapes - Choose from preset shapes. Shift and drag to constrain the shape's proportions. You can also use shapes with a gradient of colours. Click one colour and then a second colour and then use the gradient shape.

Line - Draw straight lines across the screen.

Text - Add text to artwork.

Fill - Choose between filling with a block of colour and filling with the last copied pattern.

Rubber - Rub out a mistake or remove parts of a picture.

Select - Select, move and rotate parts of your picture. Right-clicking gives you other options - see page 18.

Photo Editing Brushes - Use the photo editing effects - see page 14.

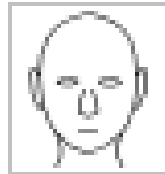
Magnet - Use a grid to add a structured effect to your painting or space points out evenly.

Outline - Choose from shape or perspective guidelines.

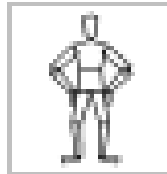
Move Paper - Make the paper move across or in a spiral as with Spin or Belt.

# Outline tools

1 | 6



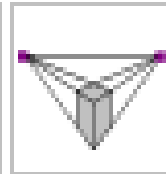
Head



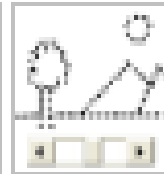
Body



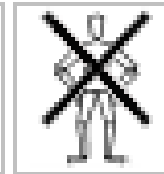
Single  
Vanishing  
point  
perspective



Double  
Vanishing  
point  
perspective



Make your  
own outline



Turn off the  
outline

The Outline tool gives you an outline to draw around. Choose from a face, a posable mannequin, and single or double point perspective shapes.

These can be moved around the screen and resized by dragging the corners.

The mannequin can be repositioned freely by dragging the green squares on the body.

Pressing L on your keyboard will draw an instant outline onto your page.  
You may wish to select a smaller sized brush for this.

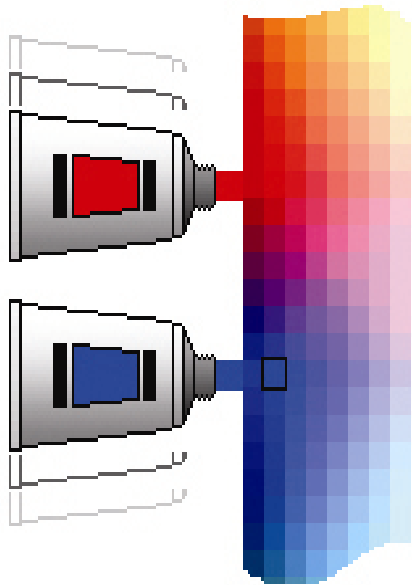
'Make your own outline' applies transparency to your drawing which you can adjust using the slider that appears. Please see the support videos for more information on this.

To remove the guideline when the drawing is complete, choose the last square from the menu which shows the mannequin crossed out.



## Mixing colours

17



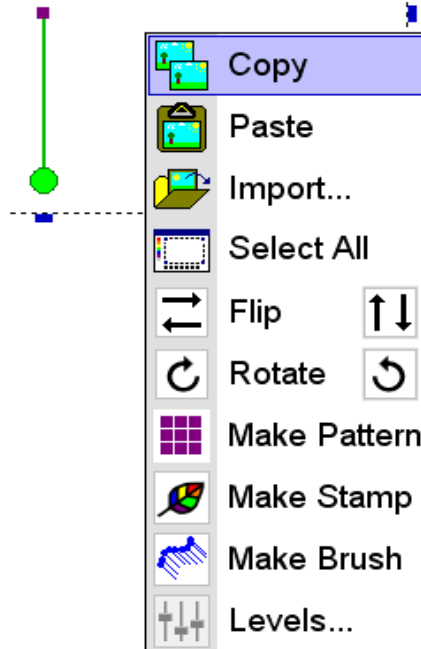
You can drag the tubes of paint up and down to mix colours.

The greater the distance between tubes, the greater the number of shades available between the two colours.

Additionally, for some brushes, adjusting the amount of water allows the different colours to mix on the screen as you paint.

## Select + Right-Click

1 | 8



When you select a part of your picture, you can right-click to see further options.

You can copy or paste your selection or import an image.

You can also select everything on the page.

Flip or rotate your selection here or by dragging on the green circle, and in addition you can turn your selection into a pattern, make it a stamp (as in eCollage) or make it into a brush which lets you paint your image across the screen.

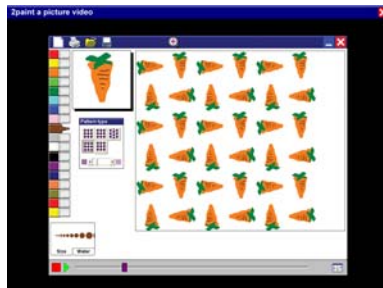
Levels allows you to adjust the levels of red, green and blue in the selection and also control the transparency of the selected area.

## Using the training videos

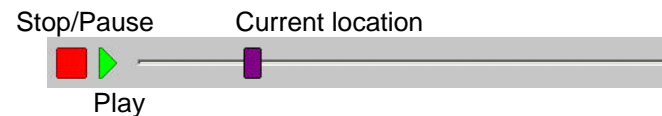
19

The CD supplied contains over 50 tutorial videos. If these have been installed then they will be available by clicking the 'Watch Videos' icon on the 2Paint A Picture submenu, accessible from your computers 'Start' menu.

In addition to showing you how to use the software, the videos are also designed to give you ideas on how to teach particular concepts and skills.



Once the videos have started playing you will see the program being used. To pause or rewind the video use the buttons at the bottom of the screen:



Click the red exit button to return to 2Paint A Picture

### **Why not use the videos:**

*To introduce the start of an activity in the ICT suite? As part of an INSET session?*

*As a way to remind individual pupils how to do an activity? To learn more!*

# System Requirements

20

Operating System: Windows 2000 / XP \*  
Processor: Recommended 2 Ghz \*  
Memory: Recommended 512MB RAM \*  
Hard Drive: 152 MB with videos (7 MB without videos)  
Display: Minimum 800x600, 16 bit High Colour. (Recommended 1024 x 768)  
CD-ROM Drive: Required for Installation  
Printer: Optional  
Soundcard & speakers: Required to view videos  
Mouse, Keyboard: Required

Flash required to view the videos (installed automatically with default setup)  
Adobe Reader required to view the user guide (available on CD-ROM)

\* We always put a lot of effort into getting our software to work on all possible operating systems and even on computers over 10 years old, as we realize that schools often have old computers. However, 2Paint A Picture is a heavily processor-intensive program and its requirements unfortunately cannot be satisfied by older computers. We are therefore only supporting Windows 2000 and XP for 2Paint A Picture.  
If you require further help, please do not hesitate to contact our technical support on (+44) 020 8203 1781 or [www.2Simple.com/support](http://www.2Simple.com/support).

# Copyright Information

---

2	1
---	---

The software described in this document is a proprietary product of 2Simple Software Ltd and is furnished to the user under a license for use as specified in the license agreement. The software may be used or copied only in accordance with the terms of the agreement. Information in this document is subject to change without notice and does not represent a commitment on the part of 2Simple Software Ltd. No part of this document may be reproduced, transmitted, transcribed, stored in any retrieval system, or translated into any language without the express written permission of 2Simple Software Ltd.

## **Trademarks**

2Simple, 2Simple Software and 2Paint A Picture are trademarks of 2Simple Software Ltd. All other trademarks and registered trademarks mentioned in this document are the property of their respective owners.

## **Copyright**

Copyright © 2007, 2Simple Software Ltd. All Rights Reserved.

2Simple Software, United Kingdom

**info@2Simple.com**

**www.2Simple.com**

2Paint A Picture User Guide - 1st (UK) Edition - Version 001 (January 2007).

## Contacting 2Simple

---

2 2

### **You can contact us:**

For general information: **info@2simple.com**

For support issues: [www.2simple.com/support](http://www.2simple.com/support) or email us at: **support@2simple.com**

Tel: (+44) 020 8203 1781

Fax: (+44) 020 8202 6370

### **You can write to us at:**

2Simple Software  
Enterprise House  
2 The Crest  
Hendon, London  
NW4 2HN

### **Faulty Media**

Should the CD-ROM develop a fault we will replace it free of charge.

## 2Paint A Picture

---

Thanks to everyone who helped make this product: Abbie Curtis, Alexandra Roumbas, Amy Heywood, Andy Hopkins, Ashley Goldstein, Ayshen Mustapha, Beatrix Jakab, Boglarka Nagyvaradi, Bukkie Oke, Caroline Walsh, Daniel Ziskind, Daniele Morisco, David Laserna, David Madden, Dawn Silver, Dean Henry, Doyin Tade, Edina Lukacs, Edit Cseh, Elin Bjorkelund, Elliot Brill, Emma Prowse, Erika Alejos, Fiona Moore, Ian Campbell, Jodie Rendell, Katalin Gosi, Katie Chart, Krisztina Konzella, Lee Mitchell, Lenka Kozakova, Lola Akinsiku, Louise Addinall, Marcel Allie, Marjorie Golding, Martin Barnett, Mary Franklin, Melissa Green, Mikee Tring, Murat Tas, Nigel Canin, Nina Trivedy, Novah Francis, Olumide Mustapha, Petra Spence, Philip Armstrong, Rebecca Isaac, Sally Nance, Samuel Barnett, Sandrine Dubois, Sarah Mthombeni, Sarah Shooter, Sean Naghibi, Sennay Habtemariam, Sharon Feldman-Vazan, Suzy Veghova, Sylvie Monheit, Trish Joseph, West Lodge Middle School, Yasaratha Herath, Zsolt Szabo. A special thanks to Daniel, Krisztina, Andy and Nigel without whom this program would be one colour short of a full palette.

*Max Wainewright, 2007*



2Simple Software  
Enterprise House, 2 The Crest  
Hendon, London NW4 2HN  
Tel: 020 8203 1781 ~ Fax: 020 8202 6370  
[www.2simple.com](http://www.2simple.com) ~ [info@2simple.com](mailto:info@2simple.com)